



Connect with

Lutheran Social Services
of North Dakota



Fargo Program Center

3911 20th Ave. S.
Fargo, ND 58103
Phone: 701.235.7341

Devils Lake Program Center

423 6th Ave. NE
Devils Lake, ND 58301
Phone: 701.662.8017

Minot Program Center

1905 2nd St. SE Suite 1B
Minot, ND 58701
Phone: 701.838.7800

Bismarck Program Center

1616 Capitol Way
Bismarck, ND 58501
Phone: 701.223.1510

Grand Forks Program Center

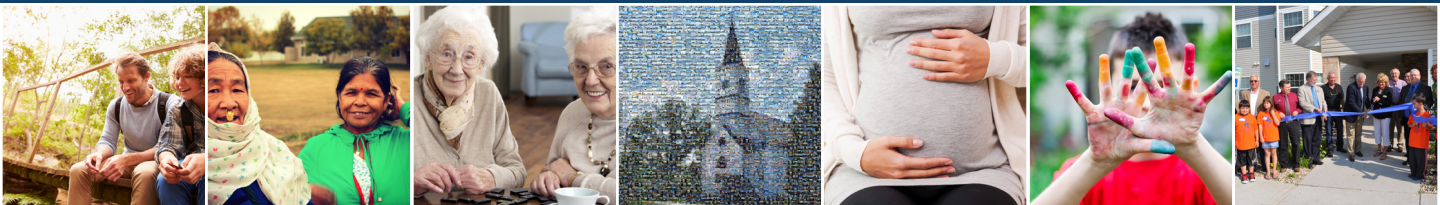
412 Demers Ave.
Grand Forks, ND 58201
Phone: 701.772.7577

Williston Program Center

P.O. Box 163
603 Main Street
Williston, ND 58802
Phone: 701.774.0749

For more information on church resources please contact:
Bryan Quigley at 701.240.4505 -or- **Jean Quigley** at 701.340.9026

www.lssnd.org/churchresources



To request an appointment with a *counselor*, call... (800) 985-7942

To connect with an *aging life care coordinator*, call... (701) 271-3232

To request or become a *senior companion*, call... (701) 838-7800

To inquire about *rental housing*, call... (701) 271-3207

To get help for someone with a *gambling addiction*, call... (701) 271-8183

For information on *child care openings* in your area, call... (800) 997-8515

To *donate* to Lutheran Social Services of North Dakota, visit...

www.lssnd.org/donate -or- mail check to **PO Box 389 Fargo, ND 58107-0389**



www.lssnd.org/churchresources